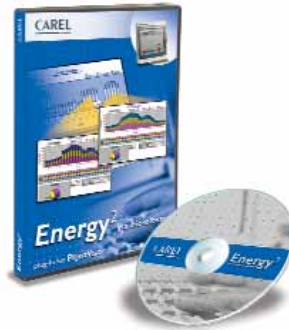




CAREL



Energy²

Energy under control!

Energy² is a panel-mounted microprocessor electronic controller especially designed to acquire data on electricity consumption and manage electrical loads.

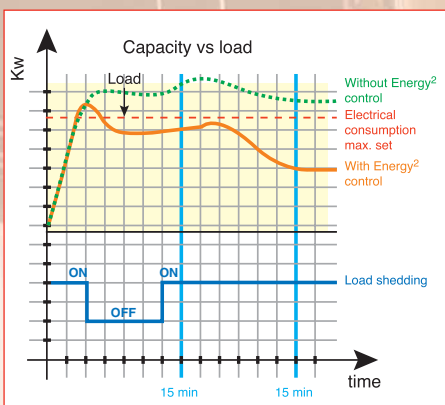
This ensures a series of advantages, such as:

- centralise management using just one controller and subsequent transfer to the supervisory system all the data corresponding to energy consumption, ensuring precise monitoring;
- limit where possible the exceeding of the contracted power supply rating through the intelligent management of the loads;
- avoid unwanted contractual adjustments;
- improve the use of electricity by activating the loads at preset times, applying programmable time bands to highlight and eliminate any energy wastage;
- optimise certain loads, such as the air-conditioning or heating system;
- identify the most suitable electricity supply contract for the effective needs, by the continuous control of energy usage.

Energy² is connected to the power meter provided by the electricity supplier, and consequently detects the signals relating to the amount of energy consumed, so as to control peaks in consumption over set periods (typically 15 min).

It performs the control functions based on the expected power consumption in the specific billing period. Momentary peaks in power consumption are tolerated, and the control action only intervenes when the average value exceeds the maximum set.

The control functions deactivate any of the loads connected to **Energy²** that are not strictly necessary for a short period of time, so as to bring the power consumption back within the set limits. The devices that are switched off are restarted as soon as the conditions of the installation allow. The priority and disconnection mode can be set for each electrical load monitored.



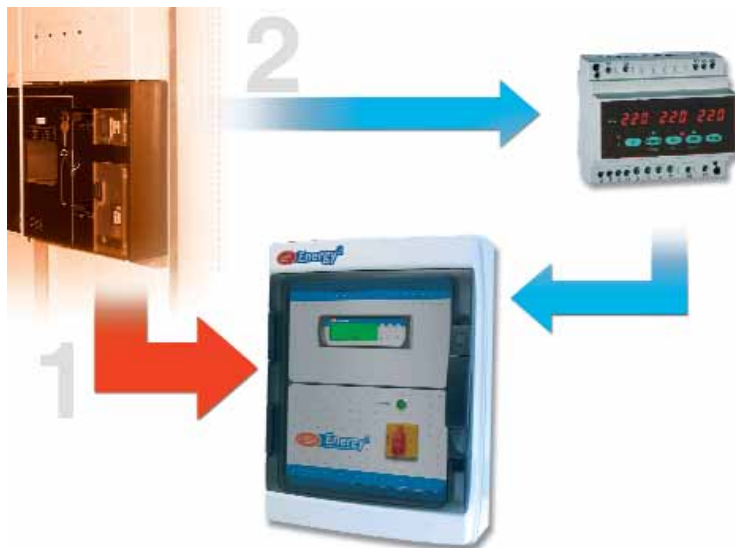
Technical specifications Large version

- management of up to 15 loads for the smart deactivation;
- one alarm output;
- max. three 4 to 20 mA inputs for monitoring power consumption;
- one analogue output for managing a 3-way valve;
- max. three NTC probes for optimising the air-conditioning or heating system.

Technical specifications XS version

- management of up to 4 loads for the smart deactivation;
- one alarm output;
- max. two 4 to 20 mA inputs for monitoring power consumption;
- max. three NTC probes for optimising the air-conditioning or heating system.

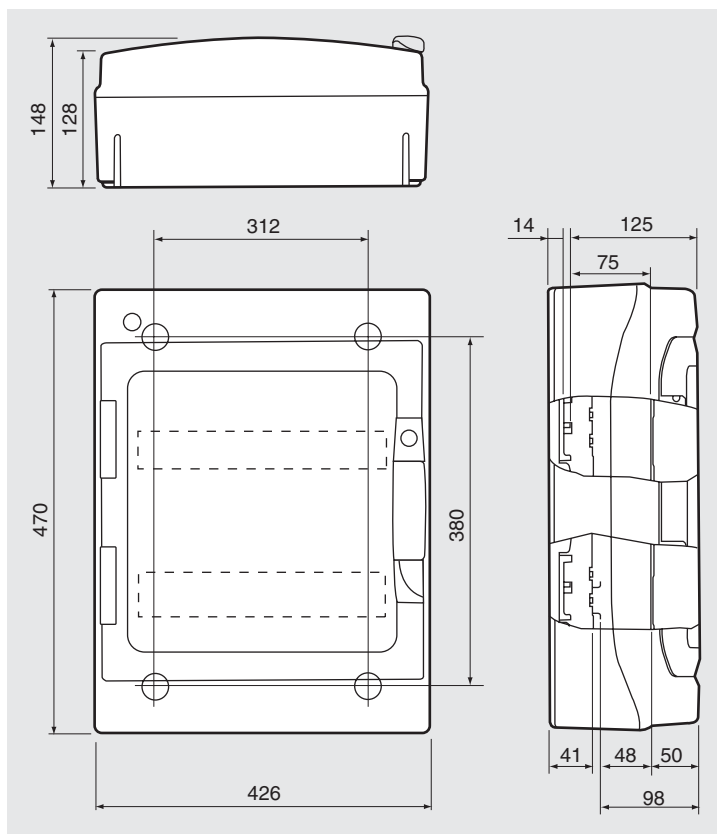
Wiring diagram



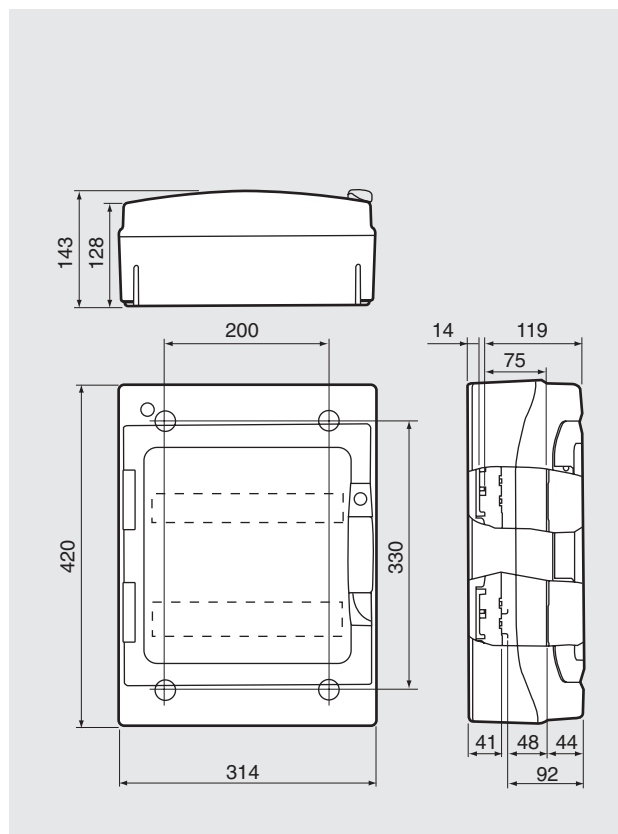
Codes and accessories

Code	Accessories
ENERGY2120 Energy ² Large	0907554AXX Electronic current transducer with 4 to 20 mA output
ENERGY7060 Energy ² XS version	6714505AXX Network analyser
PVENGMBLDO Energy ² supervisor module	

Dimensions of the Large version (mm)



Dimensions of the XS version (mm)



CAREL reserves the right to modify or change its products without prior notice

© CAREL S.p.A. 2004 all rights reserved Cod. +30225311 - rel. 1.0 - 01.10.04